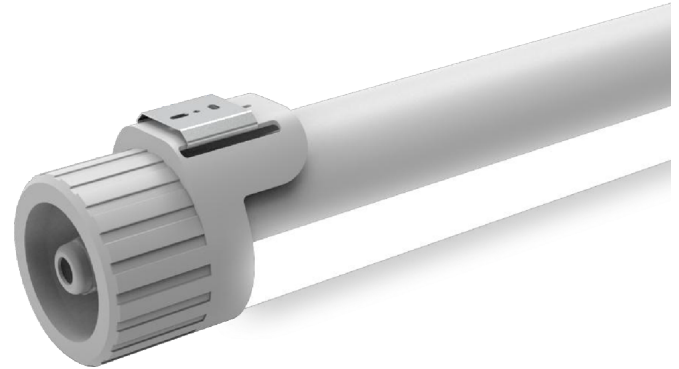


## LED WEATHER-PROOF FITTING MARINE IP69K

The new weather proof range of light battens are an ideal solution for indoor and outdoor applications. The solid exterior and high transmittance, low glare diffuser provides great performance and light distribution for all kind of applications. It is suitable for ceiling, wall and suspension mounting.



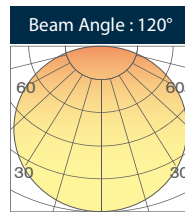
### AREAS OF APPLICATION:

- Clean room ( Class 100-100K )
- Poultry / Barn
- Livestock farm
- Meat processing industry
- Cash wash / Parking lot
- Warehouses
- Tunnel
- Basement
- Chicken shed

### HIGHLIGHTS

- High performant plastic housing (PMMA +ABS)
- LED Life Span at 50K Hours (L80B50)
- Dimmable (0-10V & DALI) function is optional
- Ammonia & corrosion resistant
- Instant-on light
- Easy installation and maintenance
- Complies with IEC 60598
- IP69K & IK05

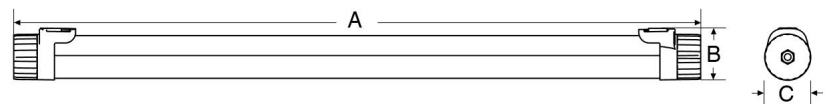
### RADIATION PATTERN



### CERTIFICATIONS

- CE
- RoHS

### TECHNICAL DRAWING



Tolerance: ±2.5mm

### TECHNICAL SPECIFICATIONS

System Power	CCT	Beam Angle	Light Output	Optics	CRI	Dimmable	Dimensions (A x B x C mm)	Voltage	Art.-No.
20W	3000/4000/5700K	120°	2600lm	Frosted	>80	NON-DIMMABLE	1180 x 96 x Ø86	220-240V	HF-W4-WbF-TxAHFG
40W	3000/4000/5700K	120°	4800lm	Frosted	>80	NON-DIMMABLE	1180 x 96 x Ø86	220-240V	HF-W4-WbH-TxAHFG
30W	3000/4000/5700K	120°	3900lm	Frosted	>80	NON-DIMMABLE	1480 x 96 x Ø86	220-240V	HF-W4-XbT-TxAHFG
50W	3000/4000/5700K	120°	6000lm	Frosted	>80	NON-DIMMABLE	1480 x 96 x Ø86	220-240V	HF-W4-XbR-TxAHFG

#### Option:

- x: Colour
- M= 3000K
- H= 4000K
- N= 5700K

#### Note :

All measurement datas are subjected to 10% tolerance due to measurement equipment tolerance and accuracy  
 Lumen maintenance factor : L80B50 @ normal room temperature (25 degree C)  
 All product specifications are subject to change without prior notice