

LED WEATHER-PROOF FITTING MARINE-T

The new weather proof range of light battens are an ideal solution for indoor and outdoor applications. The solid exterior and high transmittance, low glare diffuser provides great performance and light distribution for all kind of applications. It is suitable for both ceiling and wall mounting.

AREAS OF APPLICATION:

- Airport, Transit terminal
- Direct replacement for batten luminaires with fluorescent lamps
- Wide spectrum of applications
- Factory, assembly lines
- Hypermarkets
- Warehouses
- Carpark
- Clean room (Class 100 - 100K)

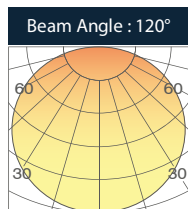
HIGHLIGHTS

- LED Light Source (Osram/Samsung/Epistar)
- LED Life Span at 50K Hours (L70B50)
- Dimmable (0-10V & DALI) function is optional
- Instant-on light
- Easy installation and maintenance
- Complies with IEC 60598
- IP65
- Class 1

CERTIFICATIONS

- CE
- RoHS

RADIATION PATTERN

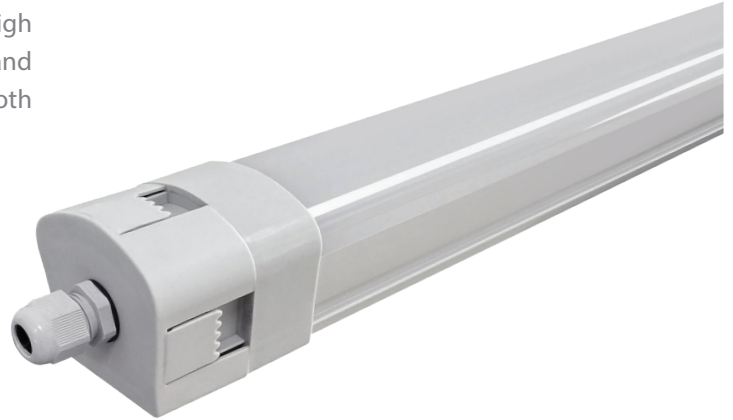


TECHNICAL SPECIFICATIONS

System Power	CCT	Beam Angle	Light Output	Optics	CRI	Dimmable	Dimensions (A x B x C mm)	Voltage	Art.-No.
30W	6500K	120°	3600lm	Frosted	>80	NON-DIMMABLE	1150 x 70 x 75	220-240V	HF-W1-MQT-QGAHCA
40W	6500K	120°	4400lm	Frosted	>80	NON-DIMMABLE	1150 x 70 x 75	220-240V	HF-W1-MQH-QGAHCA
40W	6500K	120°	4400lm	Frosted	>80	NON-DIMMABLE	1450 x 70 x 75	220-240V	HF-W1-NQH-QGAHCA
50W	6500K	120°	5500lm	Frosted	>80	NON-DIMMABLE	1450 x 70 x 75	220-240V	HF-W1-NQR-QGAHCA

Note :

All measurement datas are subjected to 10% tolerance due to measurement equipment tolerance and accuracy
 Lumen maintenance factor : L70B50 @ normal room temperature (25 degree C)
 All product specifications are subject to change without prior notice



TECHNICAL DRAWING

